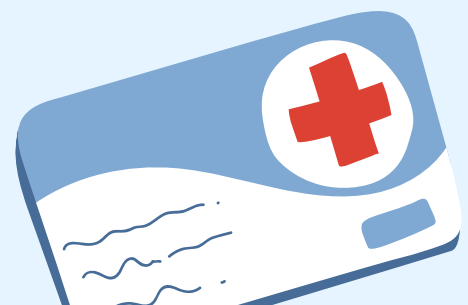
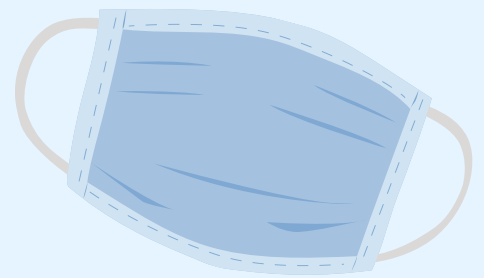


# DAILY STUDENT WELLNESS CHECK

SCHOOL DISTRICT OF FORT ATKINSON

A student/person should not enter a building or be among a group of people if **ANY** of these symptoms are present:

- Temp of 100.4 or higher
- Cough
- Vomiting
- Diarrhea
- Unusual or new rash
- Runny nose
- Sore throat
- Headache
- Body or muscle aches
- Chills
- Congestion
- Loss of taste or smell
- Exposure to someone who tested positive for COVID-19 in the last 14 days



SCHOOL DISTRICT OF



FORT • ATKINSON